

GENERAL ELECTRICAL SITE NOTES(THIS SHEET ONLY)

1. THE PRIMARY AND SECONDARY DITCH, PRIMARY AND SECONDARY CONDUITS WITH 1/2" FULL ROPE, SECONDARY CONDUCTORS, CONCRETE PAD FOR TRANSFORMER AND GROUNDING RING ARE TO BE PROVIDED AND INSTALLED BY THE ELECTRICAL CONTRACTOR. PROVIDE 36" LONG PVC SNEEPS FOR PRIMARY CONDUIT. PROVIDE LONG SNEEP GALVANIZED RIGID STEEL ELBOWS FOR THE SECONDARY. PROVIDE ALL TRENCHING, BACKFILLING, SAWCUTTING AND PATCHING OF HARD SURFACES, ECT FOR CONDUITS. THE TRANSFORMER AND PRIMARY CONDUCTORS TO ARE PROVIDED AND INSTALLED BY UTILITY COMPANY.
2. THE PRIMARY CONDUITS SHALL BE 2-4" GRAY SCHEDULE 40 UL PVC CONDUITS, AND HAVE A MINIMUM OF 48" OF FILL ON TOP OF CONDUITS. SECONDARY CONDUITS SHALL BE INSTALLED A MINIMUM OF 24" BELOW GRADE USING 24" RIGID ELBOWS ENCASED IN 4" COVER OF CONCRETE (SLURRY FILL) FROM THE MDP TO THE TRANSFORMER.
3. ELECTRICAL CONTRACTOR IS RESPONSIBLE FOR ALL COSTS OF INSTALLATION AND CONNECTING THE ELECTRICAL SERVICE CONDUITS. COORDINATE CONNECTION TO EXISTING OVERHEAD LINES WITH UTILITY CO.
4. REFER TO HELLAS PLANS FOR ADDITIONAL INFORMATION. CONTACT HELLAS LIGHTING FOR ALL REQUIREMENTS, ATTN: DON MASSEY, d.massey@hellas.com.

KEYED ELECTRICAL SITE NOTES(THIS SHEET ONLY)

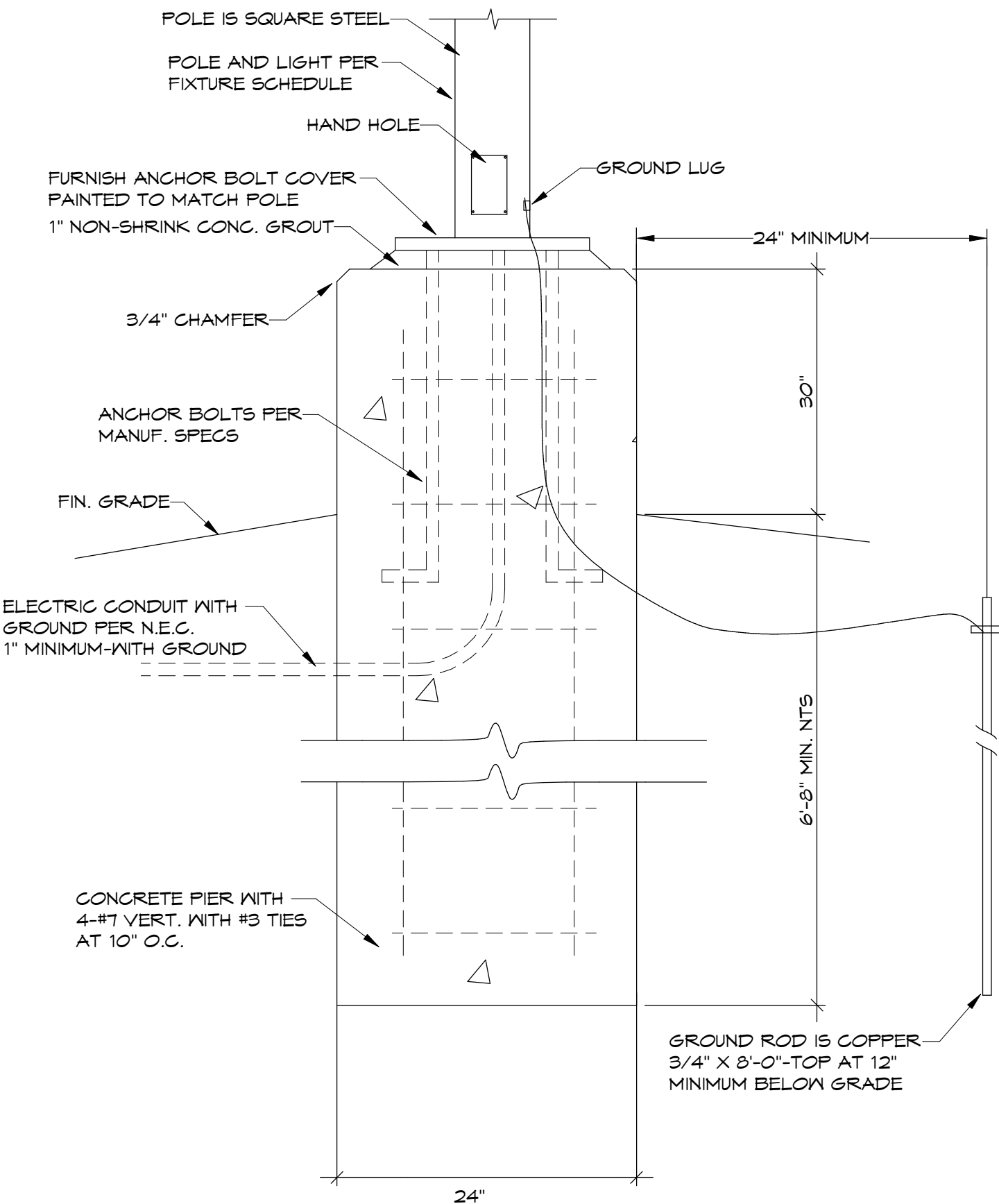
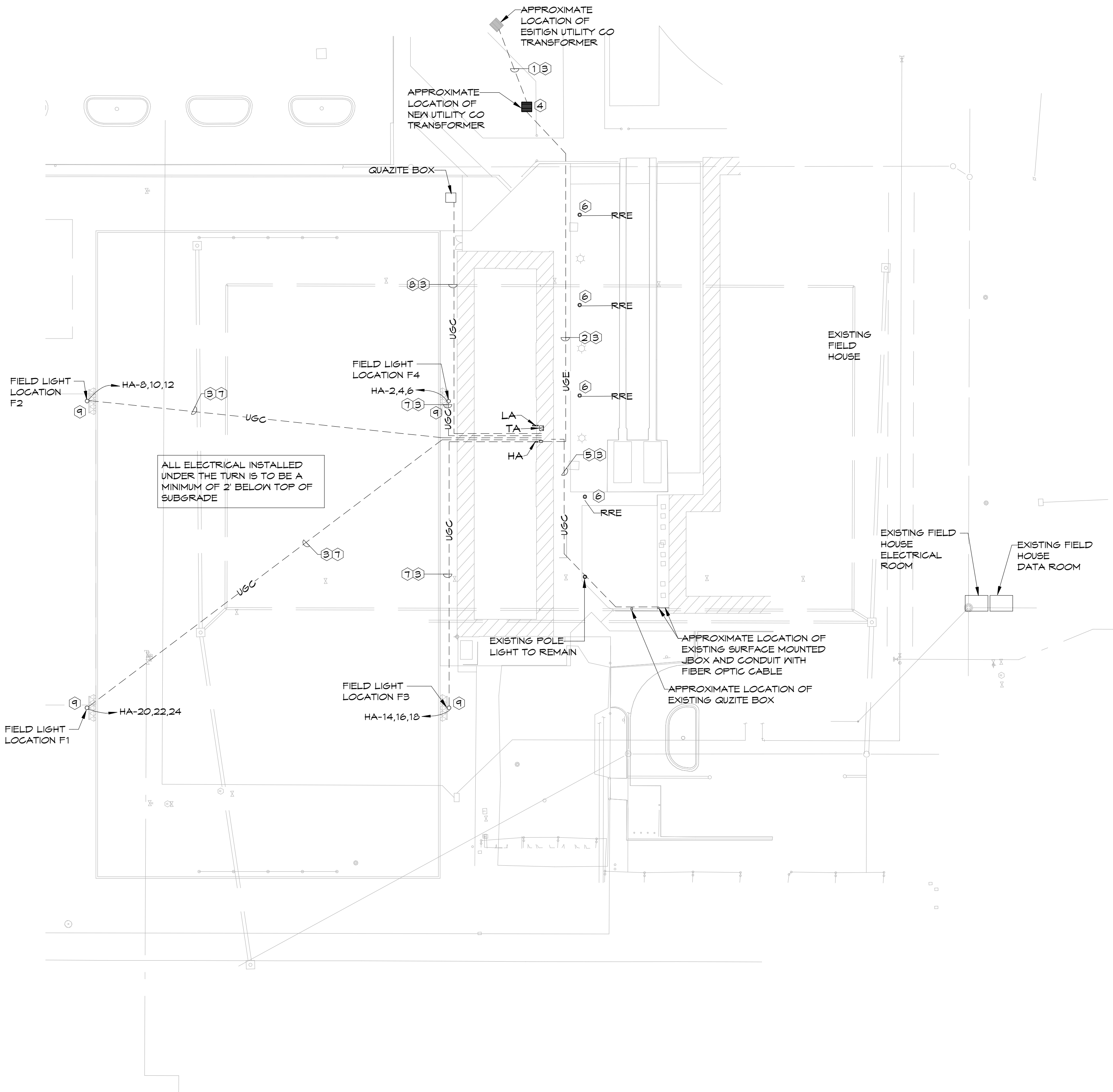
- 1 PRIMARY ELECTRICAL SERVICE CONDUIT, REFER TO GENERAL NOTE 1.
- 2 ELECTRICAL SECONDARY. REFER TO GENERAL NOTE 1, AND 2 FOR INSTALLATION. REFER TO RISER DIAGRAM FOR CONDUIT AND WIRE SIZES.
- 3 IDENTIFY OUTDOOR UNDERGROUND LINES WITH CONTINUOUS STRIP OF PLASTIC UTILITY MARKER. TAPE SHOULD STATE AT REGULAR INTERVALS: "CAUTION (STATE UTILITY) PIPE BELOW". INSTALL TAPE ONE FOOT DIRECTLY ABOVE PIPE BEFORE BACKFILLING TO GRADE.
- 4 PROPOSED LOCATION FOR UTILITY COMPANY TRANSFORMER, AND METER.
- 5 EXTEND 2-2" CONDUITS FROM DATA ROOM TO CONNECT TO EXISTING FIBER SYSTEM IN FIELD HOUSE.
- 6 EXISTING RELOCATED POLE LIGHT INSTALL NEW CIRCUITRY BACK TO EXISTING POLE LIGHT THAT IS TO REMAIN. PROVIDE NEW CONCRETE POLE BASE
- 7 REFER TO PANEL SCHEDULE HA FOR WIRE AND CONDUIT SIZE.
- 8 ROUTE 2-4" AND 2-2" CONDUITS FROM ELECTRICAL ROOM TO QUAZITE BOX.
- 9 AT EACH POLE EXTEND CIRCUITRY TO DISCONNECT LOCATED ON POLE. HELLAS IS TO PROVIDE FINAL WIRING FROM DISCONNECT TO FIXTURES. HELLAS TO PROVIDE ALL WIRELESS CONTROL OF FIELD LIGHTING. PROVIDE 5/8" X 8' COPPER GROUND ROD AT POLE. TOP OF ROD SHALL BE A MINIMUM OF 24" BELOW GRADE. CONNECT TO POLE AND COMPONENTS ENCLOSURE WITH #2/0 COPPER GROUND WIRE.

ELECTRICAL SITE PLAN LEGEND

---	UGFO	UNDERGROUND FIBER OPTIC CABLE
---	USE	UNDERGROUND ELECTRIC
---	USC	UNDERGROUND CONDUIT
---	EX-OHE	EXISTING OVERHEAD ELECTRIC
PP		EXISTING POWER POLE
□		QUAZITE BOX #PG3048BA24 WITH COVER PART #PG3048CA00

UTILITY CONTACTS:

CARROLL ELECTRIC   DEREK THURMAN   DTHURMAN@CARROLLECC.COM   1-800-432-9720



2 EXTERIOR LIGHT POLE FOOTING  
N.T.S.

1 ELECTRICAL SITE PLAN  
1" = 40'-0"



**HSAEngineering**  
479 / 452 / 8922 office  
7405 Ellis St.  
Fort Smith, AR 72916  
HSAConsultants.com



**Hight Jackson**  
ASSOCIATES  
5201 W Village Parkway, Suite 300i Rogers, Arkansas 72768 | (479) 464-4965 | www.hjarch.com

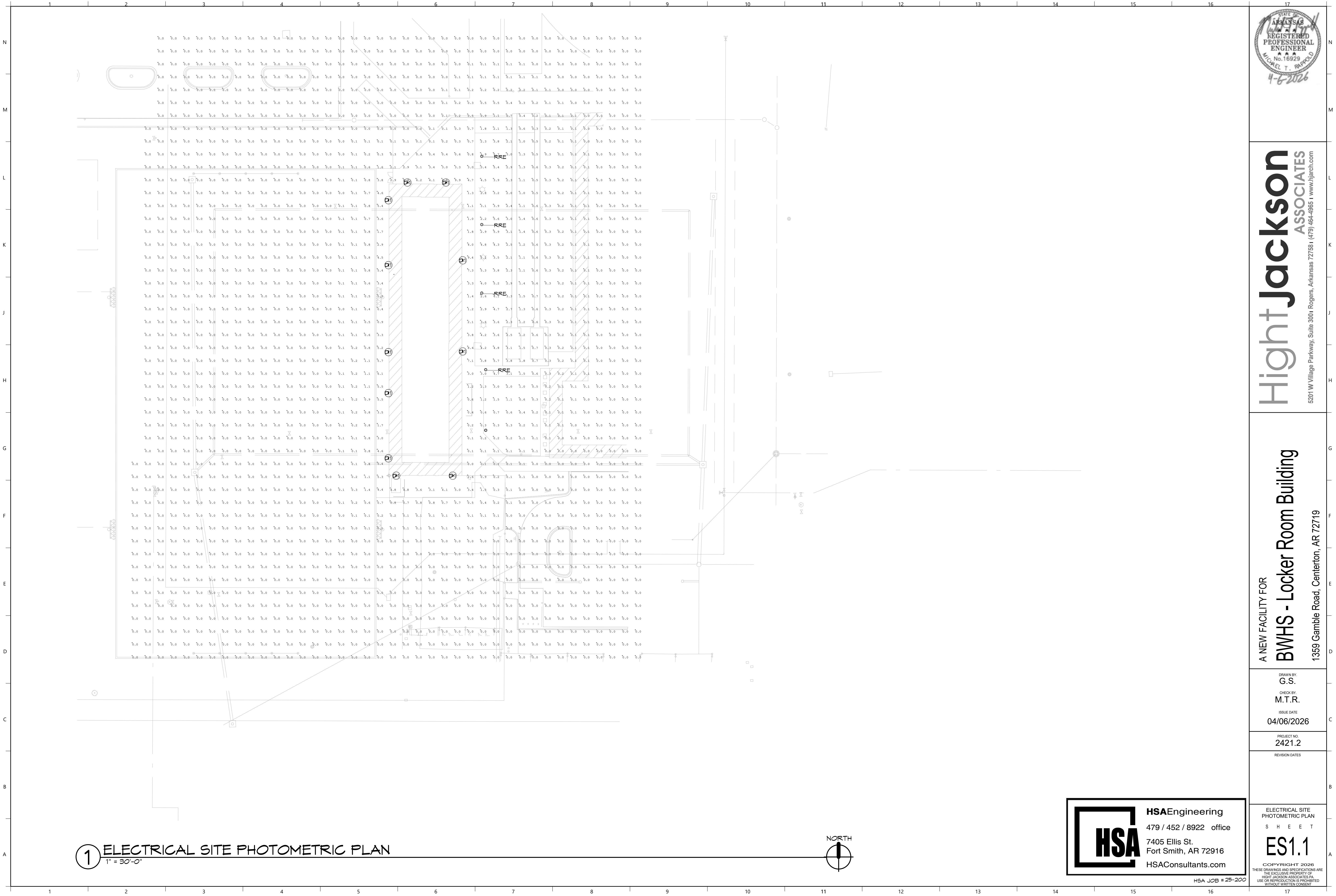
A NEW FACILITY FOR  
**BWHS - Locker Room Building**  
1359 Gamble Road, Centerton, AR 72719

DRAWN BY:  
G.S.  
CHECK BY:  
M.T.R.  
ISSUE DATE  
04/06/2026

PROJECT NO.  
2421.2  
REVISION DATES

ELECTRICAL SITE PLAN  
SHEET  
**ES1.0**  
COPYRIGHT 2026  
THESE DRAWINGS AND SPECIFICATIONS ARE THE EXCLUSIVE PROPERTY OF HIGHT JACKSON ASSOCIATES P.A. USE OR REPRODUCTION IS PROHIBITED WITHOUT WRITTEN CONSENT.

HSA JOB # 25-200



**Hight Jackson**  
ASSOCIATES  
5201 W Village Parkway, Suite 3001 Rogers, Arkansas 72768 | (479) 464-4965 | www.hjarch.com

A NEW FACILITY FOR  
**BWHS - Locker Room Building**  
1359 Gamble Road, Centerton, AR 72719

DRAWN BY:  
G.S.  
CHECK BY:  
M.T.R.  
ISSUE DATE:  
04/06/2026

PROJECT NO:  
2421.2

REVISION DATES

ELECTRICAL SITE  
PHOTOMETRIC PLAN  
S H E E T

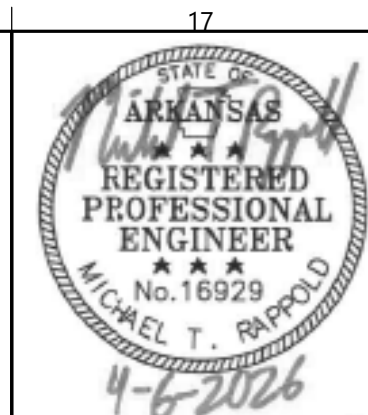
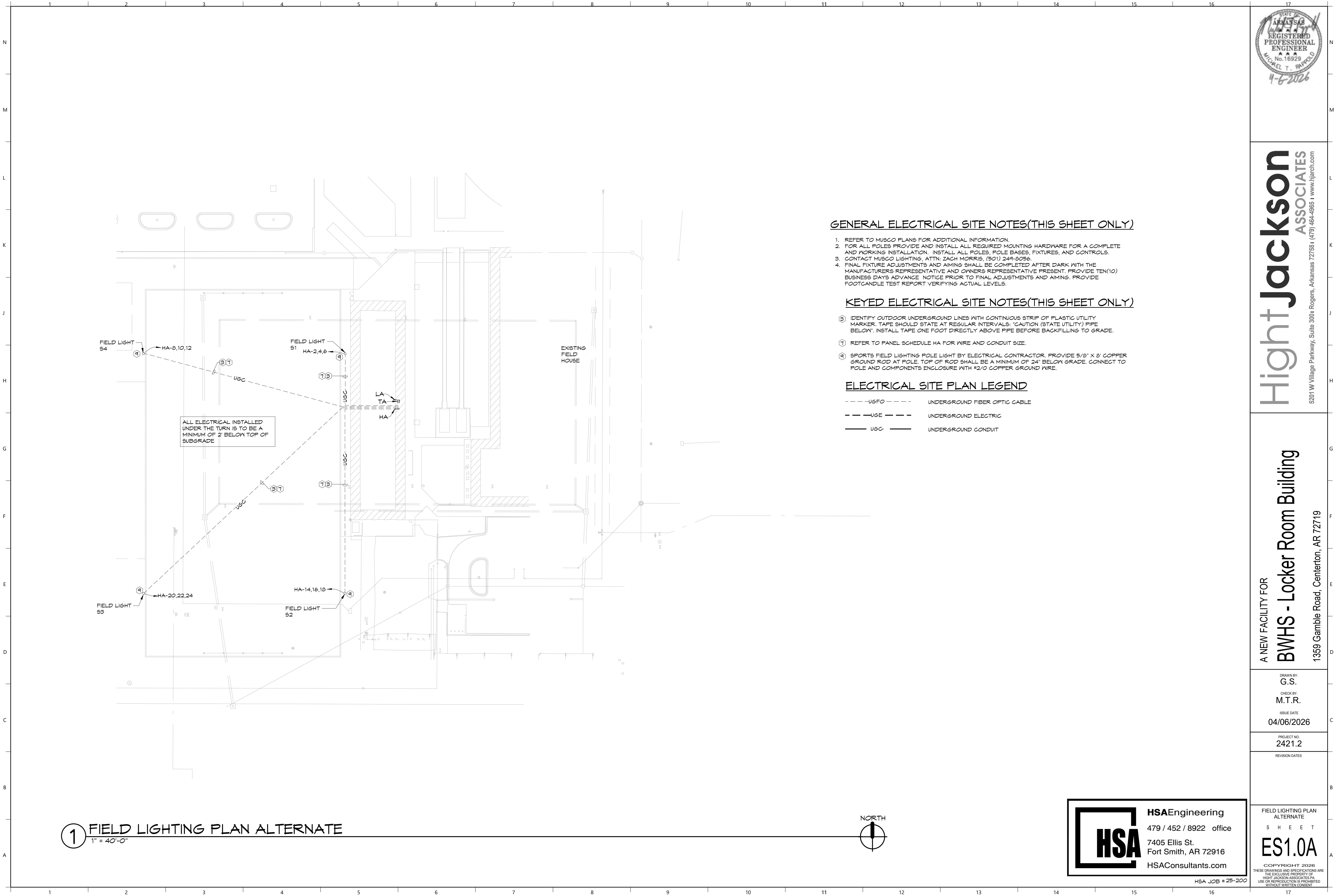
**ES1.1**

COPYRIGHT 2026  
THESE DRAWINGS AND SPECIFICATIONS ARE  
THE EXCLUSIVE PROPERTY OF  
HIGHT JACKSON ASSOCIATES P.A.  
USE OR REPRODUCTION IS PROHIBITED  
WITHOUT WRITTEN CONSENT



**HSAEngineering**  
479 / 452 / 8922 office  
7405 Ellis St.  
Fort Smith, AR 72916  
HSAConsultants.com

HSA JOB #25-200



**Hight Jackson**  
ASSOCIATES  
5201 W Village Parkway, Suite 3001 Rogers, Arkansas 72781 (479) 464-4965 | www.hjarch.com

A NEW FACILITY FOR  
**BWHS - Locker Room Building**  
1359 Gamble Road, Centerton, AR 72719

DRAWN BY:  
G.S.  
CHECK BY:  
M.T.R.  
ISSUE DATE:  
04/06/2026

PROJECT NO.  
2421.2

REVISION DATES

FIELD LIGHTING PLAN  
ALTERNATE  
SHEET  
**ES1.0A**  
COPYRIGHT 2026  
THESE DRAWINGS AND SPECIFICATIONS ARE  
THE EXCLUSIVE PROPERTY OF  
HIGHT JACKSON ASSOCIATES P.A.  
USE OR REPRODUCTION IS PROHIBITED  
WITHOUT WRITTEN CONSENT



**HSAEngineering**  
479 / 452 / 8922 office  
7405 Ellis St.  
Fort Smith, AR 72916  
HSAConsultants.com

HSA JOB # 25-200

Bentonville West High School Soccer

Centernton,AR

LIGHTING SYSTEM

Structure/Fixture Summary						
Structure ID	Structure Height	Fixt. Attachment Ht.	Fixture Qty	Fixture Type	Load	Circuit
S1	70'	70'	2	TLC-LED-1500	2.82 kW	A
		70'	3	TLC-LED-1200	3.51 kW	A
		70'	1	TLC-LED-1200	1.17 kW	A
S2-S3	70'	70'	2	TLC-LED-1500	2.82 kW	A
		70'	2	TLC-LED-900	1.76 kW	A
		70'	2	TLC-LED-1500	2.82 kW	A
S4	70'	70'	3	TLC-LED-1200	3.51 kW	A
		70'	20		24.16 kW	

Circuit Summary			
Circuit	Description	Load	Fixture Qty
A	Soccer	24.16 kW	20

Fixture Type Summary							
Type	Circuit	Source	Wattage	Lumens	L90	L80	L70
TLC-LED-1200	A	LED 5700K - 75 CRI	1170W	150,000	>120,000	>120,000	>120,000
TLC-LED-1500	A	LED 5700K - 75 CRI	1410W	181,000	>120,000	>120,000	>120,000
TLC-LED-900	A	LED 5700K - 75 CRI	880W	104,000	>120,000	>120,000	>120,000

Single Fixture Amperage Draw Chart							
Driver Specifications (.90 min power factor)			Line Amperage Per Fixture (max draw)				
Single Phase Voltage			208 (60)	220 (60)	240 (60)	277 (60)	347 (60)
TLC-LED-1500			8.4	7.9	7.3	6.3	5.0
TLC-LED-1200			6.9	6.5	6.0	5.2	4.2
TLC-LED-900			5.2	4.9	4.5	3.9	3.1

Light Level Summary

Calculation Grid Summary							
Grid Name	Calculation Metric	Illumination Ave					Circuits
		Ave	Min	Max	Max/Min	Ave/Min	
Property Line Spill @ 3ft.	Horizontal Illuminance	0.0756	0.00	0.33	-	-	A
Property Line Spill @ 5ft.	Max Vertical Illuminance Metric	0.1065	0.00	0.45	-	-	A
Soccer	Horizontal Illuminance	40.58	21	46	2.16	1.90	A

**Guaranteed Performance:** The ILLUMINATION described above is guaranteed per your Musco Warranty document.

**Field Measurements:** Individual field measurements may vary from computer-calculated predictions.

**Electrical System Requirements:** Refer to Amperage Draw Chart and/or the "Musco Control System Summary" for electrical sizing.

**Installation Requirements:** Results assume ± 3% nominal voltage at line side of the driver and structures located within 3 feet (1m) of design locations.



Not to be reproduced in whole or part without the written consent of Musco Sports Lighting, LLC.  
©1981, 2026 Musco Sports Lighting, LLC.

ENGINEERED DESIGN By: Evan Gray • File #253134B • 31-Mar-26

PROJECT SUMMARY

**HSAEngineering**  
479 / 452 / 8922 office  
7405 Ellis St.  
Fort Smith, AR 72916  
HSAConsultants.com



HightJackson

ASSOCIATES

5201 W Village Parkway, Suite 300i Rogers, Arkansas 72768 | (479) 464-4965 | www.hjarch.com

A NEW FACILITY FOR

BWHS - Locker Room Building

1359 Gamble Road, Centernton, AR 72719

DRAWN BY: G.S.
CHECK BY: M.T.R.
ISSUE DATE 04/06/2026
PROJECT NO. 2421.2
REVISION DATES

MUSCO LIGHTING DETAILS

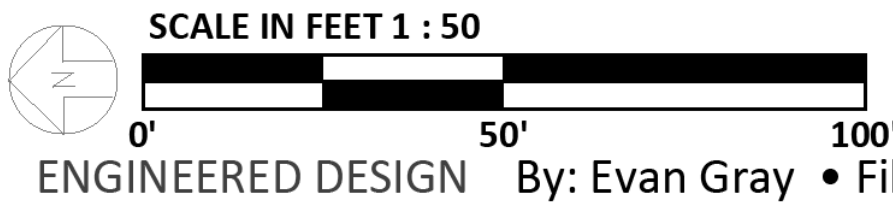
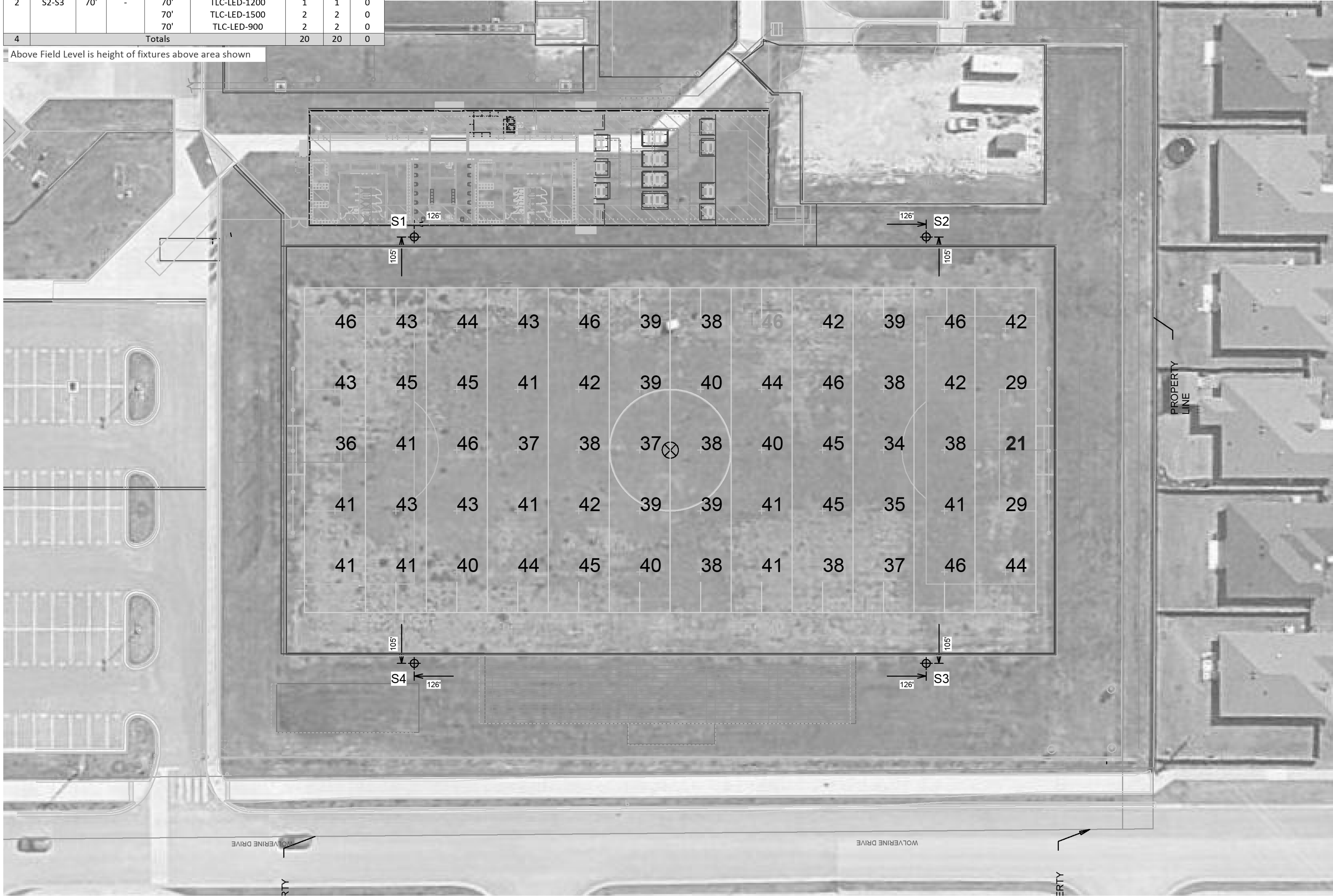
SHEET

ES1.1A

COPYRIGHT 2026  
THESE DRAWINGS AND SPECIFICATIONS ARE  
THE EXCLUSIVE PROPERTY OF  
HIGHT JACKSON ASSOCIATES P.A.  
USE OR REPRODUCTION IS PROHIBITED  
WITHOUT WRITTEN CONSENT

Equipment List For Areas Shown								
Structure				Fixtures				
QTY	STRUCTURE ID	SIZE	GRADE ELEVATION	ABOVE FIELD LEVEL	FIXTURE TYPE	QTY/POLE	THIS GRID	OTHER GRIDS
2	S1	70'	-	70'	TLC-LED-1200	3	3	0
	S4	70'	-	70'	TLC-LED-1500	2	2	0
2	S2-S3	70'	-	70'	TLC-LED-1200	1	1	0
				70'	TLC-LED-1500	2	2	0
				70'	TLC-LED-900	2	2	0
4	Totals					20	20	0

Above Field Level is height of fixtures above area shown



Pole location(s) ⊕ dimensions are relative to 0,0 reference point(s) ⊗

Bentonville West High School Soccer

Centerton, AR

Grid Summary	
Name:	Soccer
Size:	360' x 160'
Spacing:	30.0' x 30.0'
Height:	3.0' above grade

Illumination Summary	
MAINTAINED HORIZONTAL FOOTCANDLES	
Entire Grid	
Guaranteed Average:	40
Scan Average:	40.58
Maximum:	46
Minimum:	21
Avg/Min:	1.90
Max/Min:	2.16
UG (adjacent pts):	1.79
CU:	0.71
No. of Points:	60
FIXTURE INFORMATION	
Applied Circuits:	A
No. of Fixtures:	20
Total Load:	24.16 kW

**Guaranteed Performance:** The ILLUMINATION described above is guaranteed per your Musco Warranty document.

**Field Measurements:** Individual field measurements may vary from computer-calculated predictions.

**Electrical System Requirements:** Refer to Amperage Draw Chart and/or the "Musco Control System Summary" for electrical sizing.

**Installation Requirements:** Results assume ± 3% nominal voltage at line side of the driver and structures located within 3 feet (1m) of design locations.



Not to be reproduced in whole or part without the written consent of Musco Sports Lighting, LLC. ©1981, 2026 Musco Sports Lighting, LLC.

ILLUMINATION SUMMARY

**HSAEngineering**  
479 / 452 / 8922 office  
7405 Ellis St.  
Fort Smith, AR 72916  
HSAConsultants.com



**Hight Jackson**  
ASSOCIATES

5201 W Village Parkway, Suite 300 | Rogers, Arkansas 72758 | (479) 464-4965 | www.hjarch.com

A NEW FACILITY FOR

**BWHS - Locker Room Building**

1359 Gamble Road, Centerton, AR 72719

DRAWN BY: G.S.
CHECK BY: M.T.R.
ISSUE DATE: 04/06/2026
PROJECT NO: 2421.2
REVISION DATES

MUSCO LIGHTING DETAILS

S H E E T

**ES1.2A**

COPYRIGHT 2026  
THESE DRAWINGS AND SPECIFICATIONS ARE  
THE EXCLUSIVE PROPERTY OF  
HIGHT JACKSON ASSOCIATES P.A.  
USE OR REPRODUCTION IS PROHIBITED  
WITHOUT WRITTEN CONSENT



SCALE IN FEET 1 : 80  
0' 80' 160'  
ENGINEERED DESIGN By: Evan Gray • File #253134B • 31-Mar-26

Pole location(s) ⊕ dimensions are relative to 0,0 reference point(s) ⊗

Bentonville West High School Soccer

Centerton,AR

Grid Summary

Name: Property Line Spill @ 3ft.  
Spacing: 30.0'  
Height: 3.0' above grade

Illumination Summary

INITIAL HORIZONTAL FOOTCANDLES	
Entire Grid	
Scan Average:	0.0756
Maximum:	0.33
Minimum:	0.00
CU:	0.00
No. of Points:	43
FIXTURE INFORMATION	
Applied Circuits:	A
No. of Fixtures:	20
Total Load:	24.16 kW

**Guaranteed Performance:** The ILLUMINATION described above is guaranteed per your Musco Warranty document.

**Field Measurements:** Individual field measurements may vary from computer-calculated predictions.

**Electrical System Requirements:** Refer to Amperage Draw Chart and/or the "Musco Control System Summary" for electrical sizing.

**Installation Requirements:** Results assume ± 3% nominal voltage at line side of the driver and structures located within 3 feet (1m) of design locations.



Not to be reproduced in whole or part without the written consent of Musco Sports Lighting, LLC.  
©1981, 2026 Musco Sports Lighting, LLC.

ILLUMINATION SUMMARY

**HSAEngineering**  
479 / 452 / 8922 office  
7405 Ellis St.  
Fort Smith, AR 72916  
HSAConsultants.com

HSA JOB # 25-200



**Hight Jackson**  
ASSOCIATES

5201 W Village Parkway, Suite 300  
Rogers, Arkansas 72758  
(479) 464-4965  
www.hjarch.com

A NEW FACILITY FOR

**BWHS - Locker Room Building**

1359 Gamble Road, Centerton, AR 72719

DRAWN BY: G.S.
CHECK BY: M.T.R.
ISSUE DATE 04/06/2026
PROJECT NO. 2421.2
REVISION DATES

MUSCO LIGHTING DETAILS

SHEET

**ES1.3A**

COPYRIGHT 2026  
THESE DRAWINGS AND SPECIFICATIONS ARE  
THE EXCLUSIVE PROPERTY OF  
HIGHT JACKSON ASSOCIATES P.A.  
USE OR REPRODUCTION IS PROHIBITED  
WITHOUT WRITTEN CONSENT



SCALE IN FEET 1 : 80  
0' 80' 160'  
ENGINEERED DESIGN By: Evan Gray • File #253134B • 31-Mar-26

Pole location(s) ⊕ dimensions are relative to 0,0 reference point(s) ⊗

Bentonville West High School Soccer

Centerton,AR

Grid Summary

Name: Property Line Spill @ 5ft.  
Spacing: 30.0'  
Height: 5.0' above grade

Illumination Summary

		INITIAL MAX VERTICAL FOOTCANDLES
Entire Grid		
Scan Average:	0.1065	
Maximum:	0.45	
Minimum:	0.00	
CU:	0.00	
No. of Points:	43	
FIXTURE INFORMATION		
Applied Circuits:	A	
No. of Fixtures:	20	
Total Load:	24.16 kW	

**Guaranteed Performance:** The ILLUMINATION described above is guaranteed per your Musco Warranty document.

**Field Measurements:** Individual field measurements may vary from computer-calculated predictions.

**Electrical System Requirements:** Refer to Amperage Draw Chart and/or the "Musco Control System Summary" for electrical sizing.

**Installation Requirements:** Results assume ± 3% nominal voltage at line side of the driver and structures located within 3 feet (1m) of design locations.



Not to be reproduced in whole or part without the written consent of Musco Sports Lighting, LLC.  
©1981, 2026 Musco Sports Lighting, LLC.

ILLUMINATION SUMMARY



HSAEngineering  
479 / 452 / 8922 office  
7405 Ellis St.  
Fort Smith, AR 72916  
HSAConsultants.com

HSA JOB # 25-200



Hight Jackson ASSOCIATES  
5201 W Village Parkway, Suite 3001 Rogers, Arkansas 72768 | (479) 464-4965 | www.hjarch.com

A NEW FACILITY FOR  
BWHS - Locker Room Building  
1359 Gamble Road, Centerton, AR 72719

DRAWN BY:  
G.S.  
CHECK BY:  
M.T.R.  
ISSUE DATE  
04/06/2026  
PROJECT NO.  
2421.2  
REVISION DATES

MUSCO LIGHTING DETAILS  
SHEET  
ES1.4A  
COPYRIGHT 2026  
THESE DRAWINGS AND SPECIFICATIONS ARE THE EXCLUSIVE PROPERTY OF HIGHT JACKSON ASSOCIATES P.A. USE OR REPRODUCTION IS PROHIBITED WITHOUT WRITTEN CONSENT



ENGINEERED DESIGN By: Evan Gray • File #253134B • 31-Mar-26

Pole location(s) ⊕ dimensions are relative to 0,0 reference point(s) ⊗

Bentonville West High School Soccer

Centerton,AR

Equipment Layout

INCLUDES:  
· Soccer

Electrical System Requirements: Refer to Amperage Draw Chart and/or the "Musco Control System Summary" for electrical sizing.

Installation Requirements: Results assume ± 3% nominal voltage at line side of the driver and structures located within 3 feet (1m) of design locations.

Equipment List For Areas Shown

Structure				Fixtures		
QTY	STRUCTURE ID	SIZE	GLOBAL ELEVATION	ABOVE GLOBAL LEVEL	FIXTURE TYPE	QTY/POLE
2	S1	70'	-	70'	TLC-LED-1200	3
				70'	TLC-LED-1500	2
2	S2-S3	70'	-	70'	TLC-LED-1200	1
				70'	TLC-LED-1500	2
				70'	TLC-LED-900	2
4	Totals					20

Above Global Level is height of fixtures above design (0,0,0)

Single Fixture Amperage Draw Chart

Driver Specifications (.90 min power factor)	Line Amperage Per Fixture (max draw)						
	208 (60)	220 (60)	240 (60)	277 (60)	347 (60)	380 (60)	480 (60)
Single Phase Voltage							
TLC-LED-1500	8.4	7.9	7.3	6.3	5.0	4.6	3.6
TLC-LED-1200	6.9	6.5	6.0	5.2	4.2	3.8	3.0
TLC-LED-900	5.2	4.9	4.5	3.9	3.1	2.9	2.3



Not to be reproduced in whole or part without the written consent of Musco Sports Lighting, LLC. ©1981, 2026 Musco Sports Lighting, LLC.

EQUIPMENT LAYOUT



HSAEngineering  
479 / 452 / 8922 office  
7405 Ellis St.  
Fort Smith, AR 72916  
HSAConsultants.com

HSA JOB #25-200



Hight Jackson ASSOCIATES  
5201 W Village Parkway, Suite 300i Rogers, Arkansas 72768 | (479) 464-4965 | www.hjarch.com

A NEW FACILITY FOR  
BWHS - Locker Room Building  
1359 Gamble Road, Centerton, AR 72719

DRAWN BY:  
G.S.  
CHECK BY:  
M.T.R.  
ISSUE DATE  
04/06/2026

PROJECT NO.  
2421.2  
REVISION DATES

MUSCO LIGHTING DETAILS  
SHEET  
ES1.5A  
COPYRIGHT 2026  
THESE DRAWINGS AND SPECIFICATIONS ARE THE EXCLUSIVE PROPERTY OF HIGHT JACKSON ASSOCIATES P.A. USE OR REPRODUCTION IS PROHIBITED WITHOUT WRITTEN CONSENT.

System Requirements: Control System Summary

Project Name: Bentonville West High School Soccer | Project #: 253134  
Control System ID: 1 of 1  
Distribution Panel Location/ID: Soccer Service

Project Information

Control System

Control System ID: 1 of 1  
Control System Type: Control-Link Control and Monitoring System  
Communication Type: PowerLine-ST

Power Requirements

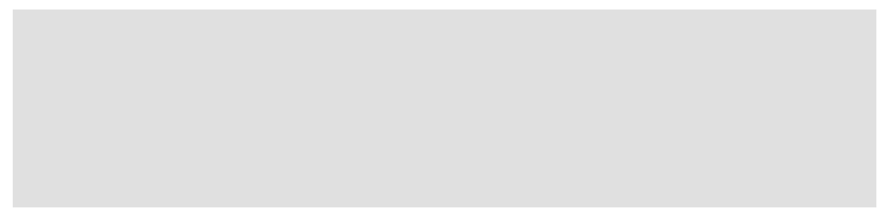
Control cabinet(s):

Control voltage (phase to neutral) 120/60  
VA loading - Inrush 1553.0  
VA loading - Sealed 180.0

Lighting Circuits:

Voltage/Hertz/Phase 480/60/3

Project Notes:



Equipment Listing

Description	Qty	Size (in)
Control and monitoring cabinet - primary	1	24 X 48
Contactors, 30 amperes	4	-
Off/On/Auto switches	1	-

Important Notes:

- Please confirm that the lighting circuit voltage listed above is accurate for this facility. This is the voltage/phase being connected and utilized at each lighting pole's electrical components enclosure disconnect. Inaccurate voltage/phase can result in additional costs and delays. Contact your Musco sales representative to confirm this item.
- In a 3 phase design, all 3 phases are to be run to each pole location. Musco's single phase luminaires come pre-wired to utilize all 3 phases across the entire facility.
- One contactor is required for each circuit at each pole location. Contactors are 3 pole and 100% rated for the published continuous load.
- If the lighting system will be fed from more than one distribution location, additional equipment may be required. Contact your Musco sales representative.
- Size overcurrent devices using the full load amps column of the Circuit Summary by Switch chart (Minimum power factor is 0.9). Size conduit per code unless otherwise specified as larger to allow for harness connectors.
- Avoid use of in-ground junction/pull boxes when possible. If used, the following best practices must be followed:
  - Underground handholes (pull boxes) must be supported to prevent settling. Boxes buried directly in soil, without support, are not allowed.
  - Use polymer concrete lids marked with ELECTRIC for underground handholes. Steel lids are not allowed.
  - Avoid underground connections when possible. If used, all wire connectors must be UL listed for Wet Locations to prevent leakage current.
- Control power wiring must be in separate conduit from line or load power wiring. Communication cables must be in separate conduit from any power wiring.
- Test wire per ANSI/NETA ATS-2021. Wires with insulation resistance less than 100 MOhms, in water-filled conduit, must be replaced.
- Refer to Installation Instructions for more details on equipment information and the installation requirements.

Sales Representative: Zach Morris | Project Engineer: Evan Gray | Scan: 253134B | Document ID: 253134P1V1C2-0331133125



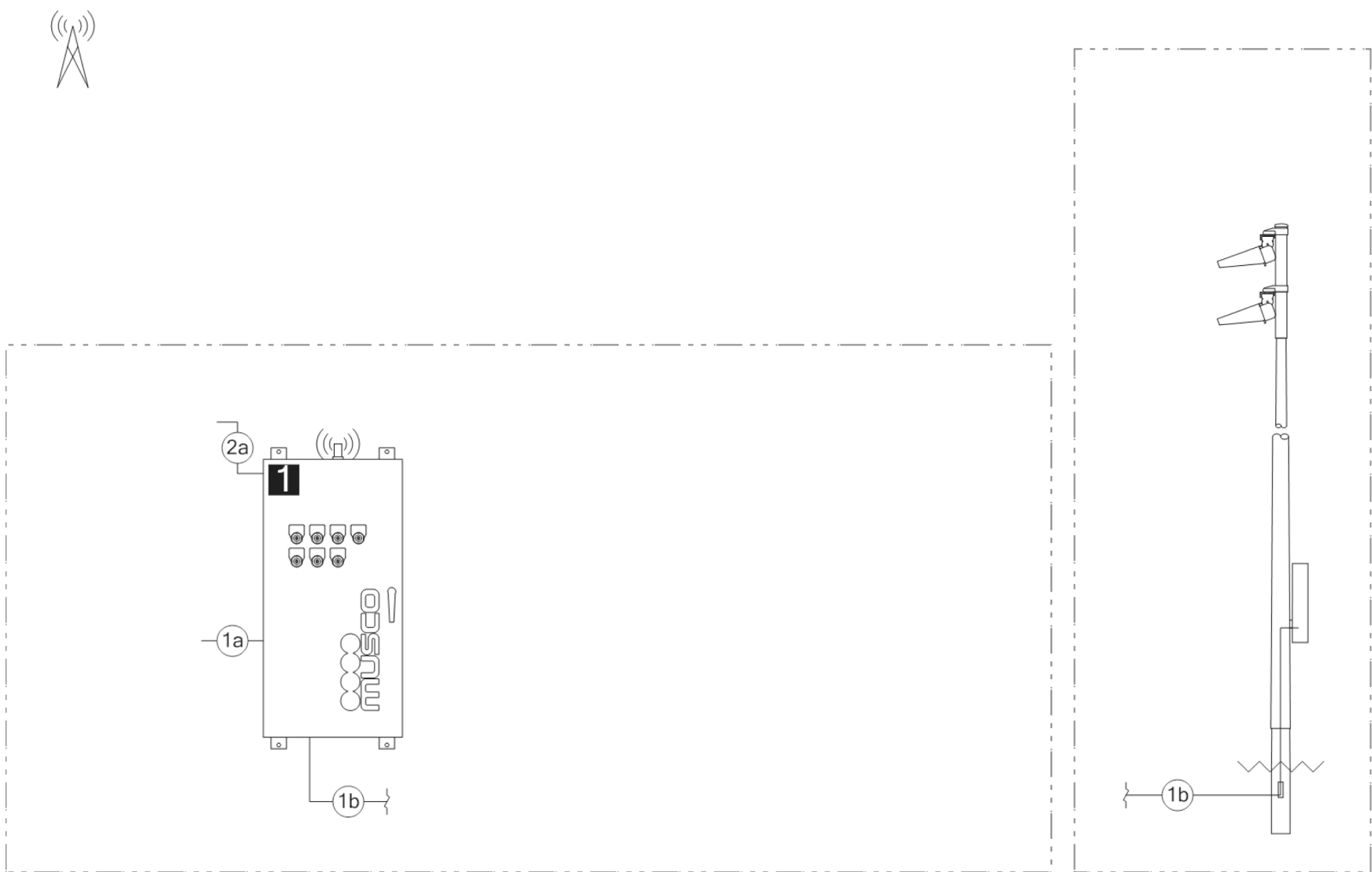
www.musco.com | lighting@musco.com

Page 1 of 3 -- 31-March-2026

System Requirements: Control System Summary

Project Name: Bentonville West High School Soccer | Project #: 253134  
Control System ID: 1 of 1  
Distribution Panel Location/ID: Soccer Service

Equipment Layout and Connection Details



Connection Details

ID	Description
1a	Line power to contactors, and equipment grounding conductor. Requires one circuit per contactor, size wiring per load and voltage drop.
1b	Load power from contactors, and equipment grounding conductor. Requires one circuit per contactor, size wiring per load and voltage drop.
2a	Control power with equipment ground to control cabinet. Requires dedicated 20 A circuit. Provide transformer if control voltage not present.

Equipment

ID	Description
1	Control and monitoring cabinet - primary

Sales Representative: Zach Morris | Project Engineer: Evan Gray | Scan: 253134B | Document ID: 253134P1V1C2-0331133125



www.musco.com | lighting@musco.com

Page 2 of 3 -- 31-March-2026

System Requirements: Control System Summary

Project Name: Bentonville West High School Soccer | Project #: 253134  
Control System ID: 1 of 1  
Distribution Panel Location/ID: Soccer Service

Circuit Summary

Zone Schedule		Switch Location
Field/Zone Description	Zone	
Soccer	1	Cabinet 1

Control Module ID: 1

Lighting Circuit Voltage: 480/60/3

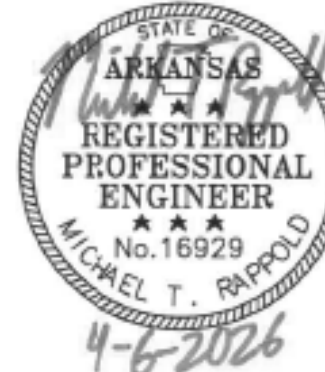
Circuit Summary by Switch							
Switch	Zone Description	Pole ID	Qty of Fixtures	Full load amperes	Contactor Size (Amps)	Cabinet #	Contactor ID
1	Soccer	S1	5	11.48	30	1	C1
	Soccer	S2	5	10.2	30	1	C2
	Soccer	S3	5	10.2	30	1	C3
	Soccer	S4	5	11.48	30	1	C4

Sales Representative: Zach Morris | Project Engineer: Evan Gray | Scan: 253134B | Document ID: 253134P1V1C2-0331133125



www.musco.com | lighting@musco.com

Page 3 of 3 -- 31-March-2026



Hight Jackson ASSOCIATES  
5201 W Village Parkway, Suite 300 | Rogers, Arkansas 72768 | (479) 464-4965 | www.hjarch.com

A NEW FACILITY FOR  
BWHS - Locker Room Building  
1359 Gamble Road, Centerton, AR 72719

DRAWN BY:  
G.S.

CHECK BY:  
M.T.R.

ISSUE DATE

04/06/2026

PROJECT NO.

2421.2

REVISION DATES

MUSCO LIGHTING DETAILS

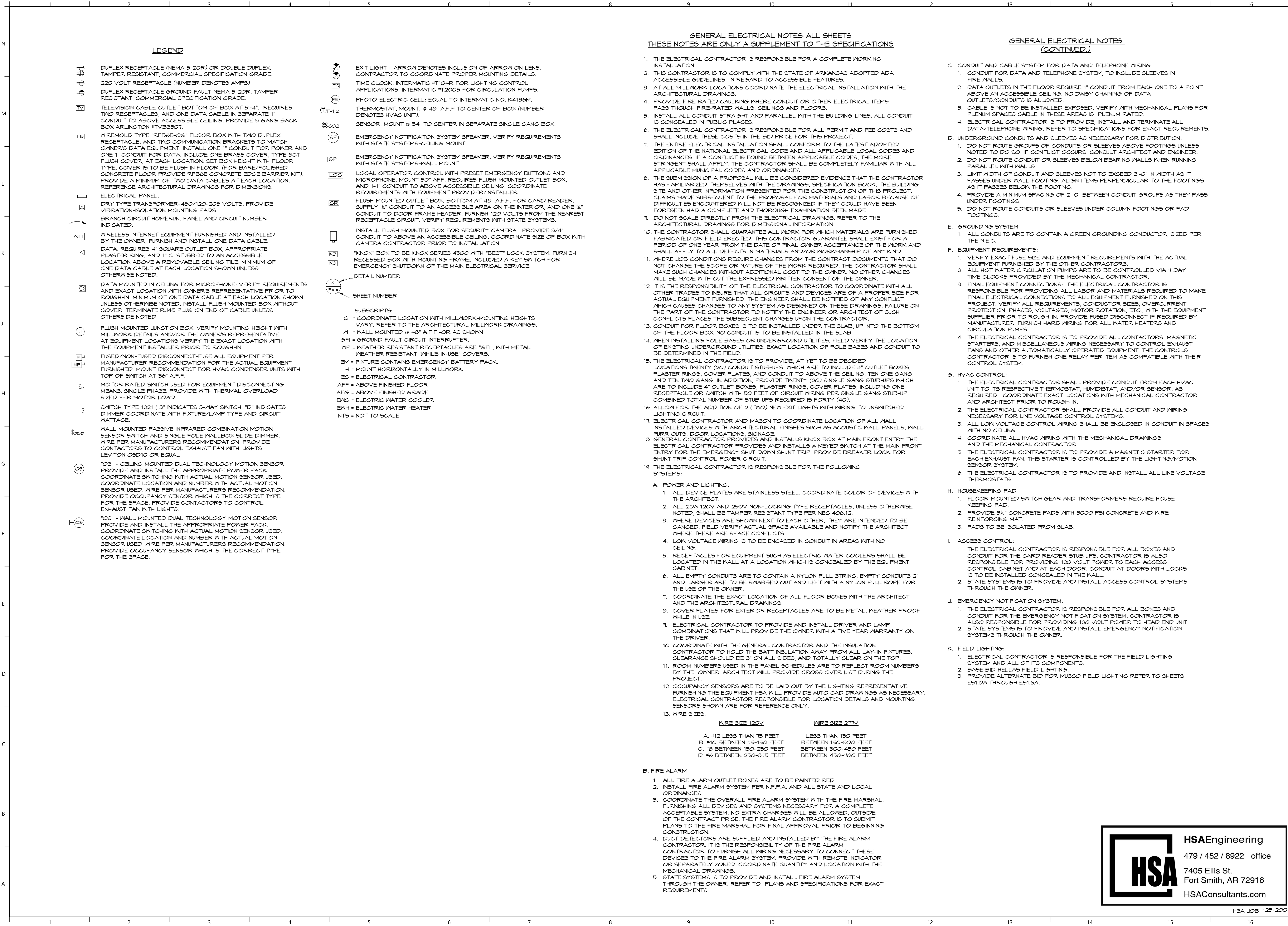
SHEET

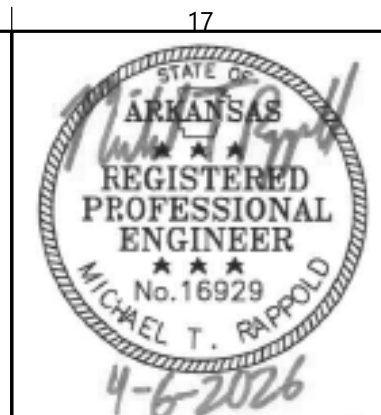
ES1.6A

COPYRIGHT 2026  
THESE DRAWINGS AND SPECIFICATIONS ARE THE EXCLUSIVE PROPERTY OF HIGHT JACKSON ASSOCIATES P.A. USE OR REPRODUCTION IS PROHIBITED WITHOUT WRITTEN CONSENT.

HSA JOB # 25-200







**Hight Jackson**  
ASSOCIATES  
5201 W Village Parkway, Suite 300i Rogers, Arkansas 72758 | (479) 464-4965 | www.hjarch.com

A NEW FACILITY FOR  
**BWHS - Locker Room Building**  
1359 Gamble Road, Centerton, AR 72719

DRAWN BY:  
G.S.  
CHECK BY:  
M.T.R.  
ISSUE DATE:  
04/06/2026

PROJECT NO.  
2421.2  
REVISION DATES

LIGHTING PLAN  
SHEET  
**E2.1**  
COPYRIGHT 2026  
THESE DRAWINGS AND SPECIFICATIONS ARE THE EXCLUSIVE PROPERTY OF HIGHT JACKSON ASSOCIATES P.A. USE OR REPRODUCTION IS PROHIBITED WITHOUT WRITTEN CONSENT.

**HSA** Engineering  
479 / 452 / 8922 office  
7405 Ellis St.  
Fort Smith, AR 72916  
HSAConsultants.com

HSA JOB # 25-200

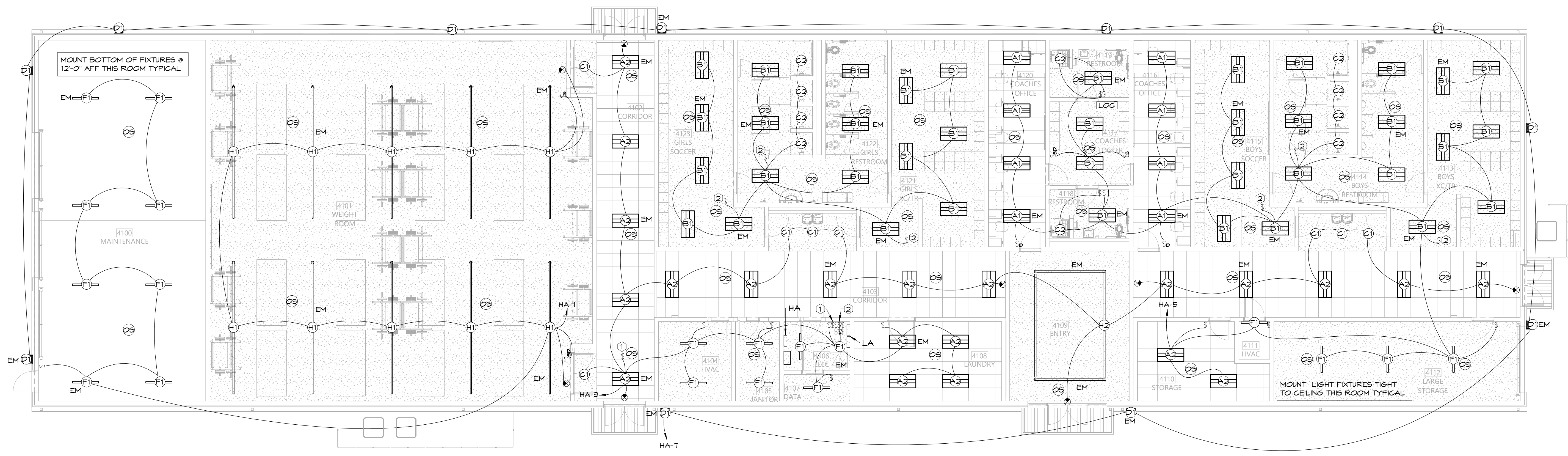
### LIGHTING FIXTURE SCHEDULE

MARK	VOLT	WATT	LAMP		MOUNTING			MOUNTING HEIGHT	MANUFACTURER	CATALOG NO.	REMARKS
			NO.	COLOR TEMP	BRKT	PEND	REC	SURF			
A1	UNV	56	--	4000K			X		H.E. WILLIAMS METALUX	LT-24-L82/840-AF-DIM-UNV 24CZ2-85-S-UNV-L840-CD1-U	2'X4' LED DIRECT INDIRECT TROFFER, 8200 LUMEN OUTPUT, 0-10V
A2	UNV	41	--	4000K			X		H.E. WILLIAMS METALUX	LT-24-L52/840-AF-DIM-UNV 24CZ2-55-S-UNV-L840-CD1-U	2'X4' LED DIRECT INDIRECT TROFFER, 5200 LUMEN OUTPUT, 0-10V
B1	UNV	56	--	4000K			X		H.E. WILLIAMS METALUX	LT-24-L82/840-AF-DFK-2448N-DIM-UNV 24CZ2-85-S-UNV-L840-CD1-U /DF-24N-U	2'X4' LED DIRECT INDIRECT TROFFER, 8200 LUMEN OUTPUT, 0-10V DIMMING, 6YP BOARD FLANGE KIT
C1	UNV	15	--	4000K			X		H.E. WILLIAMS COOPER	6DR-TL-L15/840-DIM-UNV-RN-OF-WH-WH-AD-N-F1 HG6-15-DO10/HM6-12-840-61-ND-H	6" APERTURE LED DOWNLIGHT, 1500 LUMENS, WHITE TRIM AND REFLECTOR, DIFFUSE REGRESSED LENS, 0-10V DIMMING
C2	UNV	15	--	4000K			X		H.E. WILLIAMS COOPER	6DR-TL-L15/840-DIM-UNV-SN-OF-WH-N-F1 PR6F512DO10-PR6M12MD8F5CTBS	6" APERTURE LED SHOWER DOWNLIGHT, 1500 LUMENS, WHITE FLANGE, NON-CONDUCTIVE SHOWER TRIM
D1	UNV	70	--	4000K				X	BEACON MCGRAW EDISON	QSP2-160L-75-4K8-3-UNV-DBS 155-SA1-F-740-U-T3-CTBS	18" WALL PACK, 9900 LUMEN OUTPUT, TYPE 3 DISTRIBUTION, REFER TO PLANS FOR MOUNTING HEIGHTS, DARK BRONZE FINISH
EXIT	UNV	5	--	4000K					MULE LIGHTING BARRON	PVT-U-A-G-S/R-BA S900U-LB-SR-RED-AG	EXIT SIGN, EDGE LIT, UNIVERSAL MOUNT- SEE PLANS FOR NUMBER OF SIDES AND CHEVRONS. REQUIRES UNSWITCHED HOT WIRE.
F1	UNV	40	--	4000K		X			H.E. WILLIAMS METALUX	75R-4-L50/840-(L46)-(2)VBY-3/PNU-DIM-UNV 45T2L4040R-AYG-CHAIN/SET	4" UTILITY STRIP LIGHT, 4600 LUMENS, CHAIN HUNG TO 10' AFF UNLESS OTHERWISE NOTED.
H1	UNV	15W/FT	--	4000K				X	PMC NULITE	N44-D/I-AC-40K-165-055-20'-D-BWN-XX-UNV RP44-B-FR-FCL-ASMY-15-05-L-40-UNV-D-1-1-CTBS-AC-CTBS-120	4'X20' PENDANT MOUNT DIRECT/INDIRECT, 1500D/500U LUMEN OUTPUT, 0-10V
H2	UNV	15W/FT	--	4000K				X	PMC NULITE	N44-D/I-AC-40K-165-055-CUSTOM-D-BWN-XX-UNV (RECT L16'XL10') RP44-B-FR-FCL-ASMY-15-05-L-40-UNV-D-1-1-CTBS-AC-CTBS-120 (RECT L16'XL10')	4" SQUARE PENDANT MOUNT DIRECT/INDIRECT 10'X16'L, 1500D/500U LUMEN OUTPUT, 0-10V. PROVIDE ALL HARDWARE AND 90 DEGREE HUB FOR CONTINUOUS CONFIGURATION OF LIGHT FIXTURE SHOWN ON PLAN.

### KEYED LIGHTING NOTES

- LOCATE CORRIDOR LIGHT SWITCH IN ELECTRICAL ROOM NEXT TO PANEL LABEL PLATE WITH ROOM NUMBERS.
- LOCATE LOCKER ROOMS AND RESTROOMS LIGHT SWITCHES IN ELECTRICAL ROOM NEXT TO PANEL LABEL PLATE WITH ROOM NUMBERS.

NOTE: HOLD ALL INSULATION OFF RECESSED FIXTURES AT A MINIMUM OF 3" TO THE SIDE.  
NOTE: EXIT LIGHTS AND EMERGENCY LIGHTS REQUIRES UNSWITCHED HOT WIRE PER MANUFACTURER RECOMMENDATION.  
NOTE: FIXTURES MARKED AS "CTBS" REQUIRE STANDARD FINISHED SELECTED BY THE ARCHITECT.  
NOTE: FOR ALL FIXTURES WITH 0-10V DIMMING, PROVIDE LOW VOLTAGE CABLE.  
NOTE: FIXTURES MARKED NL REQUIRE UNSWITCHED HOT WIRE.  
NOTE: ELECTRICAL CONTRACTOR TO PROVIDE AND INSTALL LED AND DRIVER COMBINATIONS THAT WILL PROVIDE THE OWNER WITH A FIVE YEAR WARRANTY ON THE FIXTURE.  
NOTE: EM FIXTURES REQUIRE EMERGENCY BATTERY PACKS.  
NOTE: FIELD VERIFY ALL FIXTURE LENGTHS NOTES AS LENGTH PER PLANS. PROVIDE CONTINUOUS RUNS OF FIXTURES. COORDINATE WITH THE ARCHITECTURAL DRAWINGS AND THE ARCHITECT.



### 1 LIGHTING PLAN

1/8" = 1'-0"





**Hight Jackson**  
ASSOCIATES  
5201 W Village Parkway, Suite 300i Rogers, Arkansas 72768 | (479) 464-4965 | www.hjarch.com

A NEW FACILITY FOR  
**BWHS - Locker Room Building**  
1359 Gamble Road, Centerton, AR 72719

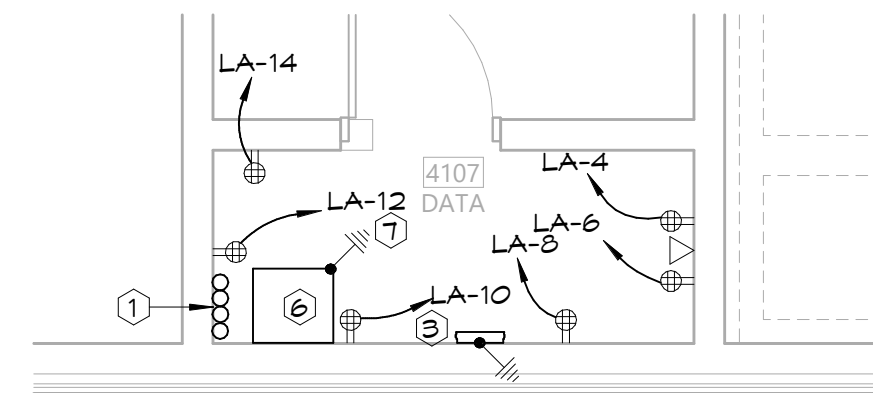
DRAWN BY:  
G.S.  
CHECK BY:  
M.T.R.  
ISSUE DATE:  
04/06/2026

PROJECT NO.  
2421.2  
REVISION DATES

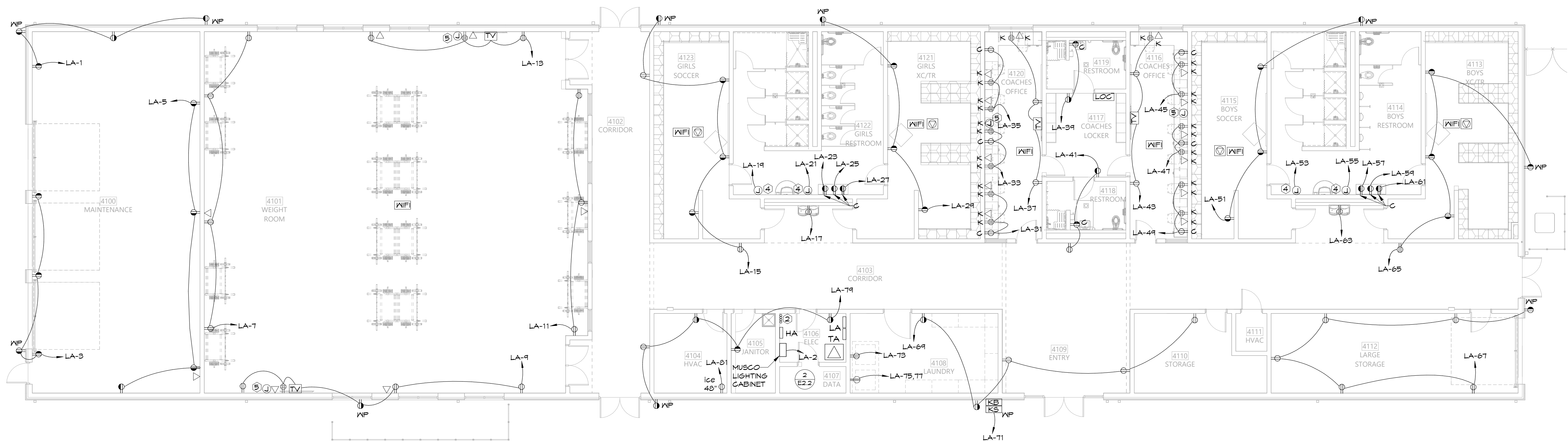
POWER PLAN  
SHEET  
**E.2.2**  
COPYRIGHT 2026  
THESE DRAWINGS AND SPECIFICATIONS ARE  
THE EXCLUSIVE PROPERTY OF  
HIGHT JACKSON ASSOCIATES P.A.  
USE OR REPRODUCTION IS PROHIBITED  
WITHOUT WRITTEN CONSENT

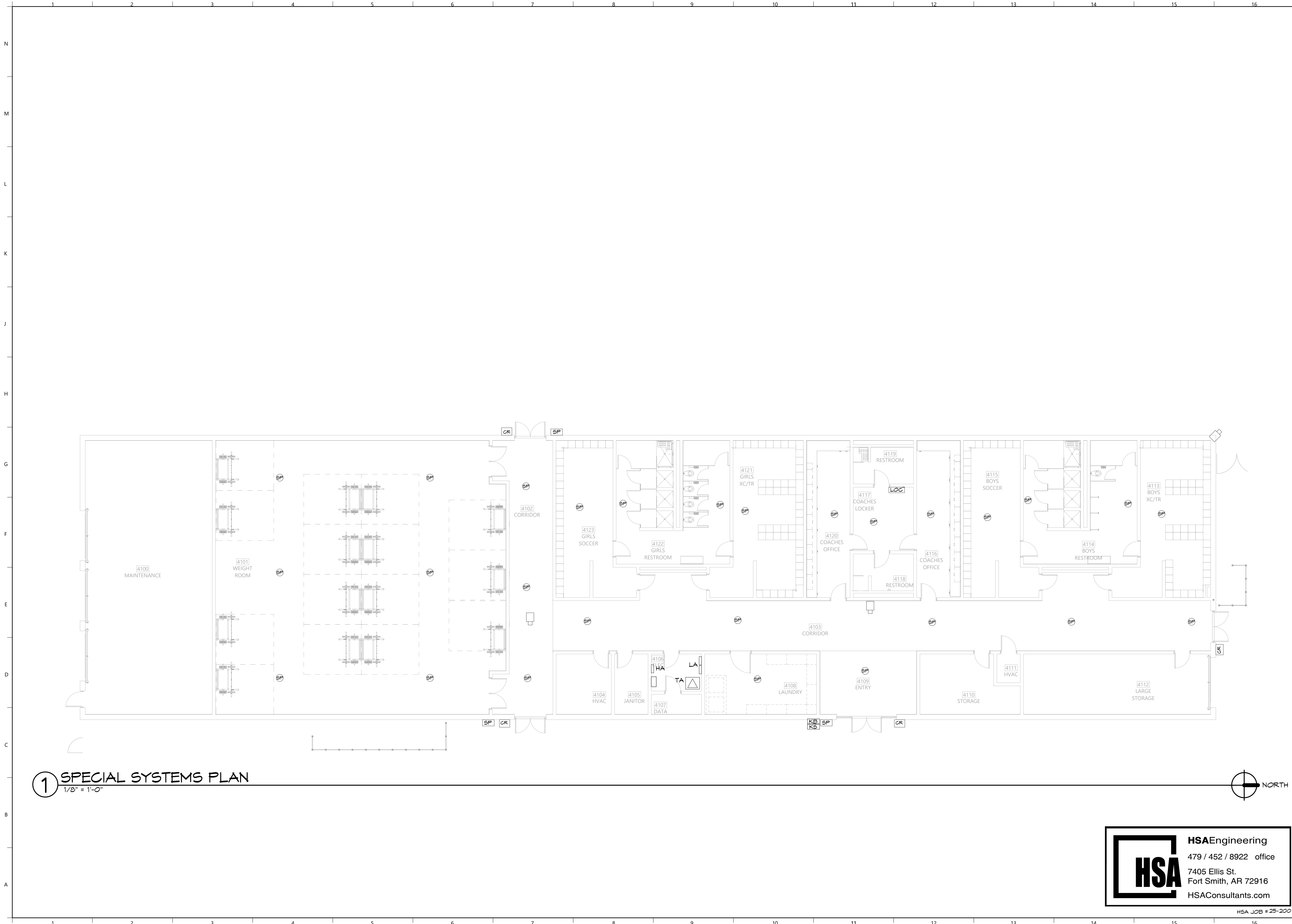
### KEYED POWER NOTES

- 1 REFER TO ELECTRICAL SITE PLAN FOR REQUIREMENTS FOR LOW VOLTAGE CONDUITS.
- 2 REFER TO ELECTRICAL SITE PLAN FOR REQUIREMENTS FOR POWER CONDUITS.
- 3 PROVIDE 1/4" X 20" X 4" GROUNDING BAR. INSTALL A #1/0 COPPER GROUND WIRE FROM GROUND BAR TO ELECTRICAL SERVICE GROUNDING ELECTRODE. LEAVE 5' TAIL.
- 4 HAND DRYER. COORDINATE EXACT LOCATION AND MOUNTING HEIGHT WITH THE GENERAL CONTRACTOR.
- 5 JUNCTION BOX AT ABOVE COUNTER. STUB ONE 1" CONDUIT ABOVE CEILING FOR CONNECTION TO MONITOR.
- 6 EQUIPMENT RACK, REFER TO SPECIFICATIONS FOR ADDITIONAL INFORMATION. QUANTITY AS REQUIRED.
- 7 CONNECT TO THE GROUND BAR VIA A #6 COPPER GROUND CONDUCTOR.

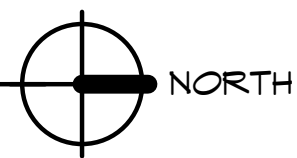


### 2 ENLARGED DATA ROOM POWER PLAN 1/4" = 1'-0"





**1 SPECIAL SYSTEMS PLAN**  
1/8" = 1'-0"



**HSAEngineering**  
479 / 452 / 8922 office  
7405 Ellis St.  
Fort Smith, AR 72916  
HSAConsultants.com

HSA JOB # 25-200

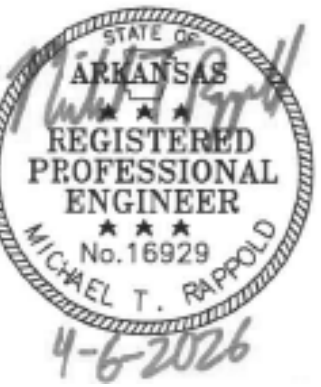
**Hight Jackson**  
ASSOCIATES  
5201 W Village Parkway, Suite 300i Rogers, Arkansas 72761 (479) 464-4965 | www.hjarch.com

A NEW FACILITY FOR  
**BWHS - Locker Room Building**  
1359 Gamble Road, Centerton, AR 72719

DRAWN BY:  
**G.S.**  
CHECK BY:  
**M.T.R.**  
ISSUE DATE:  
**04/06/2026**

PROJECT NO.  
**2421.2**  
REVISION DATES

SPECIAL SYSTEMS PLAN  
SHEET  
**E2.4**  
COPYRIGHT 2026  
THESE DRAWINGS AND SPECIFICATIONS ARE THE EXCLUSIVE PROPERTY OF HIGHT JACKSON ASSOCIATES P.A. USE OR REPRODUCTION IS PROHIBITED WITHOUT WRITTEN CONSENT.



**Hight Jackson**  
ASSOCIATES  
5201 W Village Parkway, Suite 300i Rogers, Arkansas 72761 (479) 464-4965 | www.hjarch.com

A NEW FACILITY FOR  
**BWHS - Locker Room Building**  
1359 Gamble Road, Centerton, AR 72719

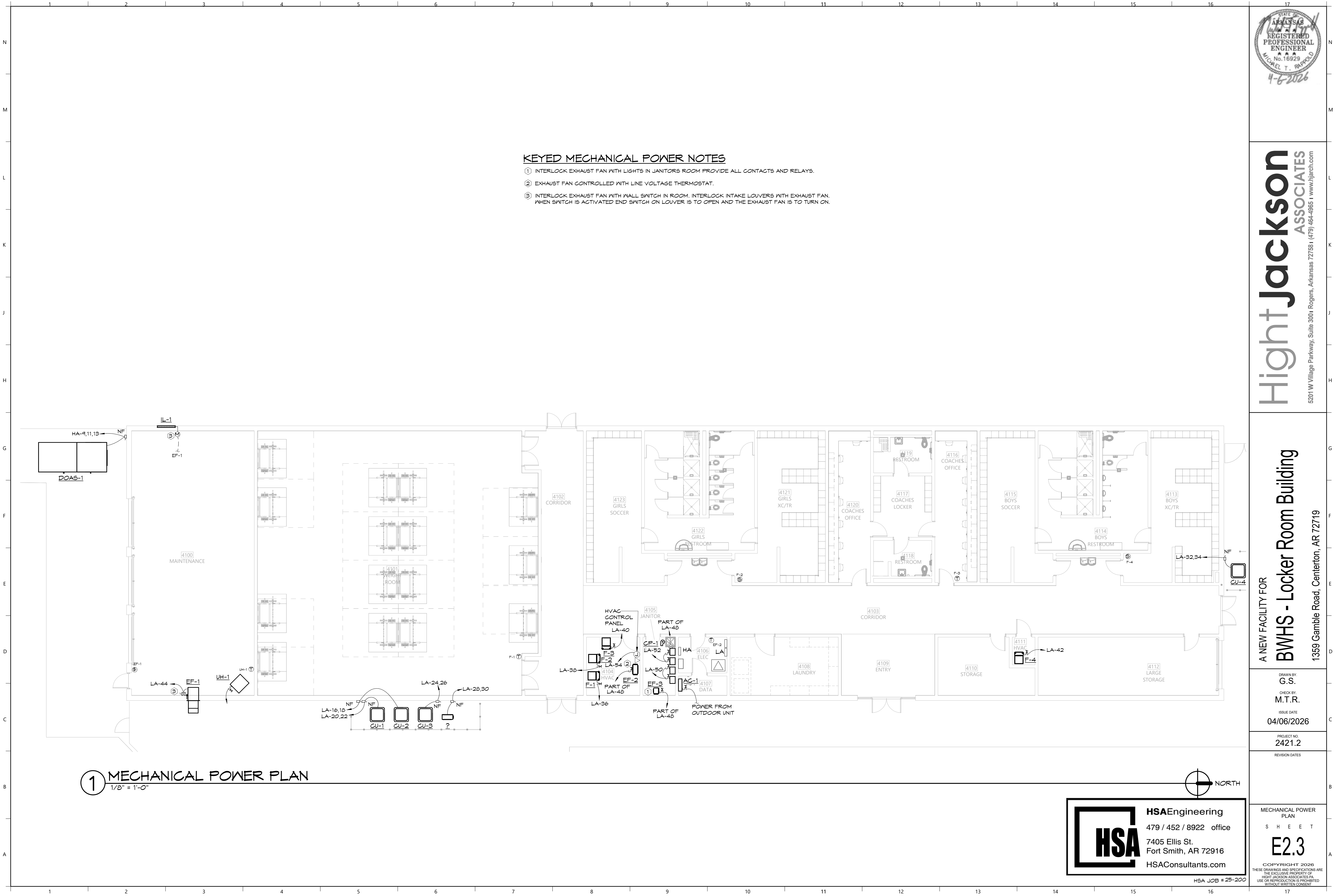
DRAWN BY:  
G.S.  
CHECK BY:  
M.T.R.  
ISSUE DATE:  
04/06/2026

PROJECT NO:  
2421.2  
REVISION DATES

MECHANICAL POWER  
PLAN  
S H E E T  
**E2.3**  
COPYRIGHT 2026  
THESE DRAWINGS AND SPECIFICATIONS ARE  
THE EXCLUSIVE PROPERTY OF  
HIGHT JACKSON ASSOCIATES P.A.  
USE OR REPRODUCTION IS PROHIBITED  
WITHOUT WRITTEN CONSENT

**KEYED MECHANICAL POWER NOTES**

- ① INTERLOCK EXHAUST FAN WITH LIGHTS IN JANITORS ROOM PROVIDE ALL CONTACTS AND RELAYS.  
② EXHAUST FAN CONTROLLED WITH LINE VOLTAGE THERMOSTAT.  
③ INTERLOCK EXHAUST FAN WITH WALL SWITCH IN ROOM. INTERLOCK INTAKE LOUVERS WITH EXHAUST FAN.  
WHEN SWITCH IS ACTIVATED END SWITCH ON LOUVER IS TO OPEN AND THE EXHAUST FAN IS TO TURN ON.



**1 MECHANICAL POWER PLAN**  
1/8" = 1'-0"

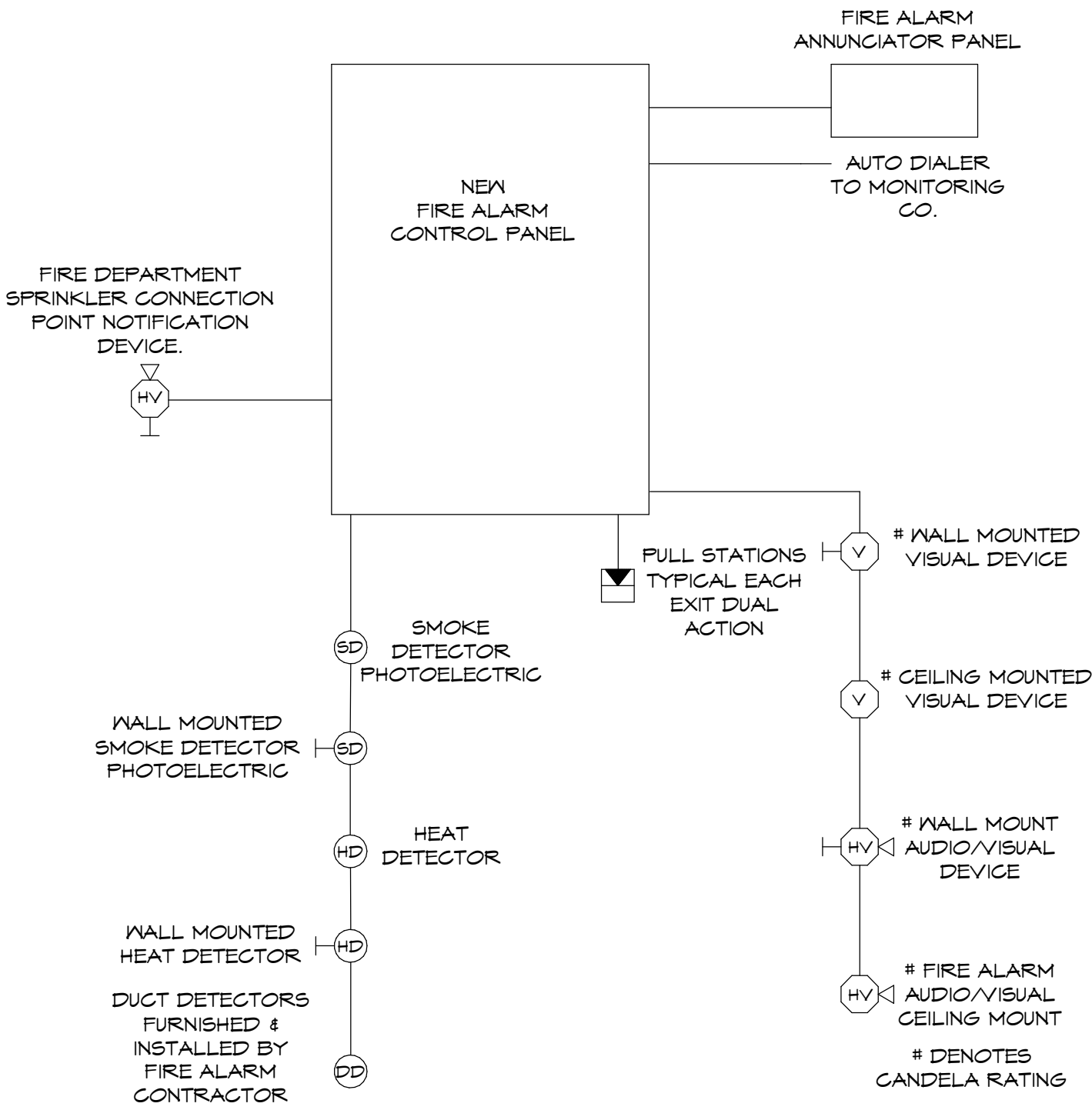


**HSAEngineering**  
479 / 452 / 8922 office  
7405 Ellis St.  
Fort Smith, AR 72916  
HSAConsultants.com

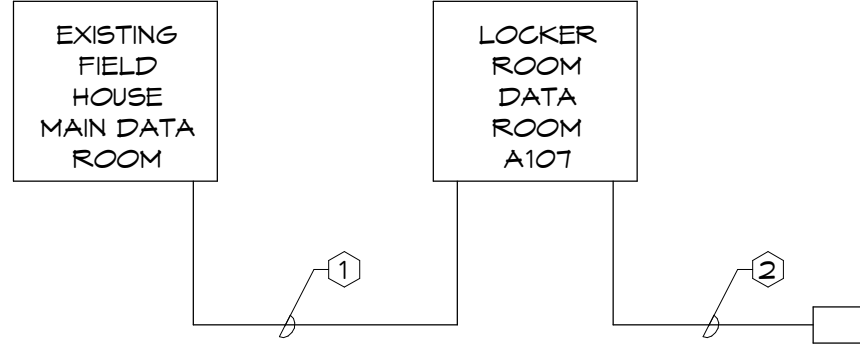
HSA JOB #25-200

MOUNTING HEIGHTS		
ELECTRICAL OUTLET DEVICE TYPE	MASONRY WALL, BASE (STARTER) COURSE HEIGHT 4 INCH / 8 INCH MOUNTING HEIGHT ABOVE FLOOR TO BOTTOM OF OUTLET (DEVICE) BOX	SHEETROCK WALL, BASE MOUNTING HEIGHT ABOVE FLOOR TO BOTTOM OF OUTLET (DEVICE) BOX
* RECEPTACLES OUTLETS, MICROPHONE OUTLETS (JACKS), EQUIPMENT OUTLETS (JACKS), TELEVISION OUTLETS (JACKS), PORTABLE TELEPHONE OUTLETS, COMPUTER OUTLETS, ETC.		
* GENERAL DEVICE THROUGHOUT	18"	18"
* MECHANICAL EQUIPMENT ROOMS	52"	48"
* ABOVE 24" HIGH COUNTER TOPS	30"	32"
* ABOVE 30" HIGH COUNTER TOPS	36"	40"
* ABOVE 36" HIGH COUNTER TOPS	44"	48"
* ABOVE 48" HIGH COUNTER TOPS	52"	56"
* ABOVE BACKSPLASH TOP	2" (MINIMUM)	2" (MINIMUM)
* ABOVE OR ADJACENT TO LAVATORIES	44"	48"
* BEHIND DOMESTIC REFRIGERATORS	52"	56"
* BEHIND DOMESTIC WASHERS AND DRYERS	36"	32"
* SERVING DOMESTIC DISHWASHERS	2"	2"
* WALL-MOUNTED TELEPHONE OUTLETS	44"	48"
* TELEPHONE/VIDEO CONTROL	44"	48"
TOGGLE SWITCHES	48"	48"
RECESSED MOTOR CONTROLLERS	60"	56"
ELECTRICAL PANELS, TERMINAL CABINETS, ETC., TO CENTER OF TUB OR BOX	50"	48"
WALL SWITCHES	48"	48"
HVAC THERMOSTAT/SENSOR	48"	48"
VOLUME CONTROLS, CALL-IN SWITCHES, DOOR BELL BUTTONS	44"	44"
HORN/STROBES (FIRE ALARM)	80"	80"
* PULL STATIONS (FIRE ALARM)	42" MINIMUM 48" MAXIMUM	42" MINIMUM 48" MAXIMUM

NOTE: VERIFY ALL MILLWORK LOCATIONS WITH THE ARCHITECTURAL MILLWORK DRAWINGS PRIOR TO ROUGH-IN.  
\* OPERATING HANDLE TO BE MOUNTED NO LESS THAN 42" OR NO MORE THAN 48" A.F.F.



- NOTE:
1. INSTALL WIRING TO ALL DUCT DETECTORS. REFER TO SPECIAL SYSTEMS PLANS.
  2. COORDINATE WITH THE MECHANICAL DRAWINGS.
  3. COORDINATE WITH THE LOCAL "A.H.J." PRIOR TO BIDDING THIS PROJECT.
  4. FIRE ALARM CONTRACTOR TO MODIFY AS NECESSARY FOR SYSTEM PROVIDED.



### COMMUNICATIONS/DATA CONDUIT RISER KEYED NOTES

1. 2-2" CONDUITS, STUB-UP 12" ABOVE FINISHED FLOOR IN LOCKER ROOM DATA ROOM, CAP AND LABEL AT BOTH ENDS. REFER TO ELECTRICAL SITE PLAN FOR REQUIREMENTS.
2. INSTALL QUAZITE BOX TO ALLOW CONNECTION OF FUTURE CONDUITS TO DATA ROOM. REFER TO ELECTRICAL SITE PLAN FOR REQUIREMENTS.

- NOTES: COMMUNICATION/DATA SYSTEM CONDUITS
1. EACH CONDUIT IS LEFT WITH A 1/4" FULL ROPE.
  2. SNAB ALL CONDUITS AND CAP AFTER INSTALLATION. CUT ALL CONDUITS TO THE SAME LENGTH, KEEP SQUARE AND STRAIGHT WITH THE WALL AND THE FLOOR.
  3. LABEL EACH CONDUIT ON BOTH ENDS AND PROVIDE LABELING ON RISER DIAGRAM
  4. CONDUIT ELBOWS ARE TO BE 36" RADIUS MINIMUM. SCHEDULE 80 P.V.C.
  5. COORDINATE INSTALLATION WITH ARCHITECT AND GENERAL CONTRACTOR.

## 2 FIRE ALARM SYSTEM RISER DIAGRAM

N.T.S.

## 3 COMMUNICATIONS/DATA CONDUIT SYSTEM RISER

N.T.S.



**Hight Jackson**  
ASSOCIATES  
5201 W Village Parkway, Suite 300 | Rogers, Arkansas 72768 | (479) 464-4965 | www.hjarch.com

A NEW FACILITY FOR  
**BWHS - Locker Room Building**  
1359 Gamble Road, Centerton, AR 72719

DRAWN BY:

G.S.

CHECK BY:

M.T.R.

ISSUE DATE

04/06/2026

PROJECT NO.

2421.2

REVISION DATES

ELECTRICAL DETAILS

S H E E T

**E3.1**

COPYRIGHT 2026  
THESE DRAWINGS AND SPECIFICATIONS ARE  
THE EXCLUSIVE PROPERTY OF  
HIGHT JACKSON ASSOCIATES P.A.  
USE OR REPRODUCTION IS PROHIBITED  
WITHOUT WRITTEN CONSENT

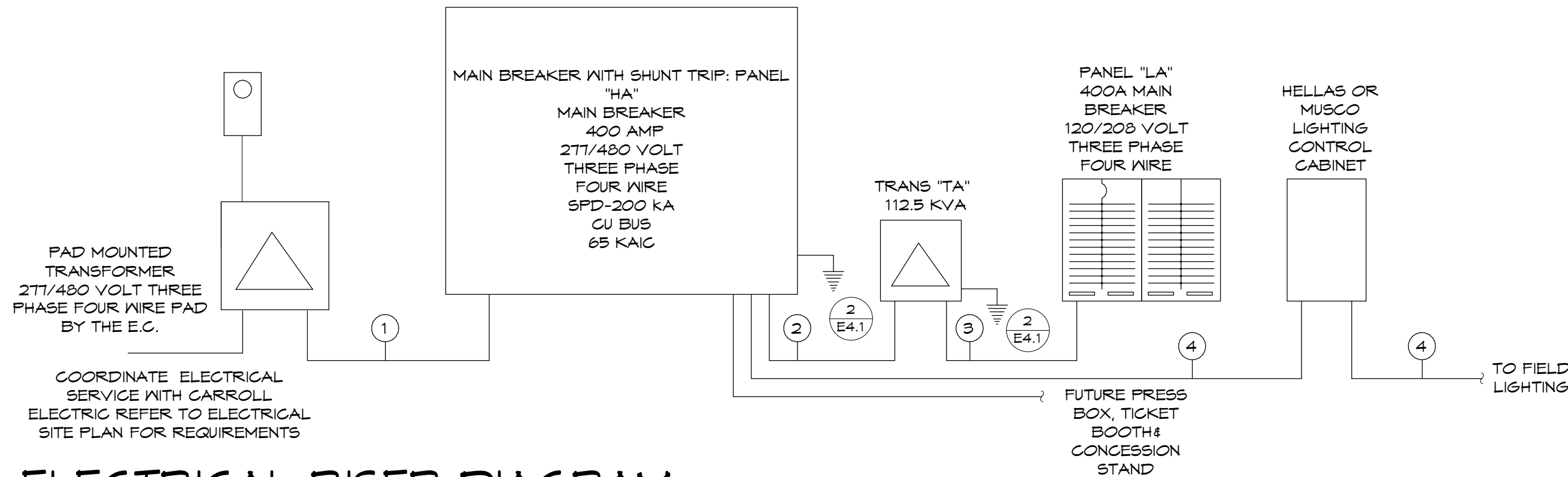


**HSAEngineering**  
479 / 452 / 8922 office  
7405 Ellis St.  
Fort Smith, AR 72916  
HSAConsultants.com

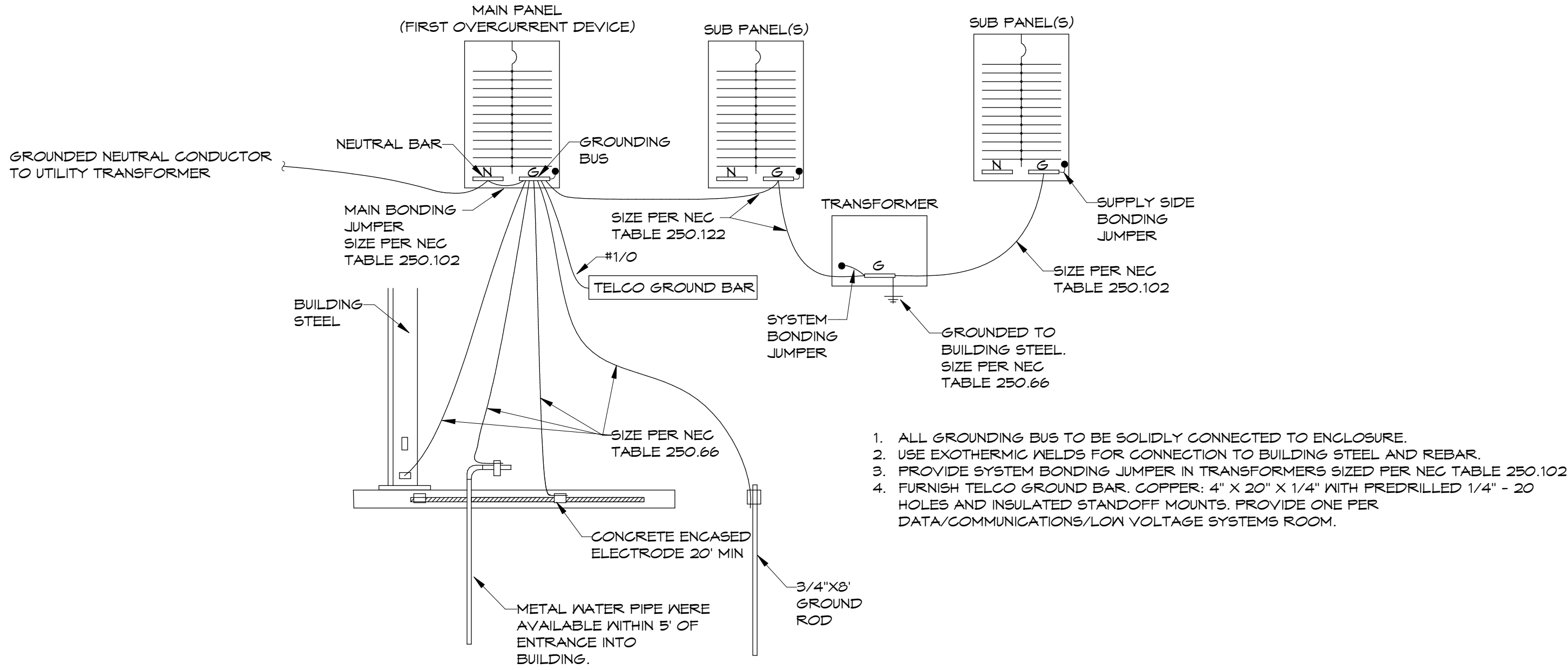
HSA JOB # 25-200

FEEDER SCHEDULE

- ① 2 SETS: 4-#3/0, 2" CONDUIT EACH  
② 3-#2/0, 1-#6 GRD; 2" CONDUIT  
③ 2 SETS: 4-#3/0, 1-#3 GRD; 2" CONDUIT EACH  
④ FIELD LIGHTING CIRCUIT CONDUIT AND WIRE PER PANEL SCHEDULE



① ELECTRICAL RISER DIAGRAM  
N.T.S.



② GROUNDING DIAGRAM  
N.T.S.

**WARNING**

MAXIMUM AVAILABLE FAULT CURRENT:  
X.XXX  
(SYMMETRICAL RMS AMPERES)

DATE: XX/XX/XX

**WARNING**

NOMINAL SYSTEM VOLTAGE:  
277/480V

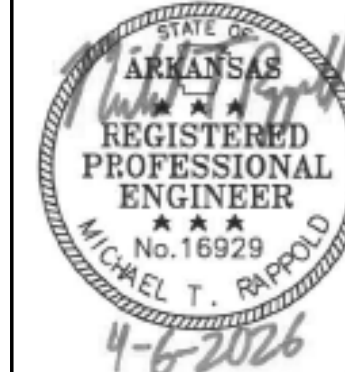
MAXIMUM AVAILABLE FAULT CURRENT:  
X.XXX  
(SYMMETRICAL RMS AMPERES)

OVERCURRENT PROTECTIVE DEVICE  
CLEARING TIME:  
XX SECONDS

DATE: XX/XX/XX

- NOTES:
- LABEL SHALL BE ATTACHED TO ELECTRICAL SERVICE EQUIPMENT PER NEC 110.24.
  - PROVIDE DURABLE WEATHERPROOF LABEL.
  - LABEL IS SHOWN TO SCALE.
  - ELECTRICAL CONTRACTOR SHALL COORDINATE AVAILABLE FAULT CURRENT WITH UTILITY AND COMPLETE LABEL ACCORDINGLY.

③ FAULT CURRENT LABEL  
N.T.S.



**Hight Jackson**  
ASSOCIATES

5201 W Village Parkway, Suite 300i Rogers, Arkansas 72781 (479) 464-4965 | www.hjarch.com

A NEW FACILITY FOR  
**BWHS - Locker Room Building**  
1359 Gamble Road, Centerton, AR 72719

DRAWN BY:  
G.S.

CHECK BY:  
M.T.R.

ISSUE DATE

04/06/2026

PROJECT NO.

2421.2

REVISION DATES

ELECTRICAL RISER  
DIAGRAMS

S H E E T

**E4.1**

COPYRIGHT 2026  
THESE DRAWINGS AND SPECIFICATIONS ARE  
THE EXCLUSIVE PROPERTY OF  
HIGHT JACKSON ASSOCIATES P.A.  
USE OR REPRODUCTION IS PROHIBITED  
WITHOUT WRITTEN CONSENT



**HSAEngineering**  
479 / 452 / 8922 office  
7405 Ellis St.  
Fort Smith, AR 72916  
HSAConsultants.com

HSA JOB # 25-200

Amp Rating: 400 A  
Mains: MCB  
MCB Rating: 400 A  
3/Phase/Wire 480/277 Wye / 3 / 4

Manufacturer: SQUARE D  
Panel Type: NF  
Mounting: Surface  
Remarks: CU BUS

Fault Rating: 65 KAIC  
Fed From:  
Location: ELEC 4106

Load Classification	Connected Load	Demand Factor	Estimated Demand	Panel Totals
Lighting	8929 VA	125.00%	11162 VA	
Receptacle	31120 VA	66.07%	20560 VA	Total Conn. Load: 160946 VA
HVAC	60945 VA	100.00%	60945 VA	Total Est. Demand: 152618 VA
Motor	0 VA	0.00%	0 VA	Total Conn. Current: 146 A
Other	59954 VA	100.00%	59954 VA	Total Est. Demand Current: 184 A
Kitchen	0 VA	0.00%	0 VA	

**Notes:**  
 \* REFER TO ELECTRICAL RISER FOR CONDUIT AND WIRE SIZE.  
 \*\* CONTROLLED BY TIME CLOCK AND PE CELL.  
 \*\*\* ROUTE CIRCUIT THRU FIELD LIGHTING CONTROL PANEL. COORDINATE WITH FIELD LIGHTING PROVIDER

Amp Rating: 400 A  
Mains: MCB  
MCB Rating: 400 A  
Volts/Phase/Wire 120/208 Wye / 3 / 4

Manufacturer: SQUARE D  
Panel Type: NQ  
Mounting: Surface  
Remarks: CU BUS

Fault Rating: 22 KAIC  
Fed From: TA  
Location: ELEC 4106

Total Load:	26302 VA	26591 VA	22379 VA
Total Amps:	225 A	227 A	186 A

Notes:

- \* REQUIRES A GFI BREAKER

Notes:  
\* REQUIRES A GFI BREAKER



**Hight Jackson**  
ASSOCIATES  
25201 W Village Parkway, Suite 300 | Rogers, Arkansas 72758 | (479) 464-4965 | [www.hjarch.com](http://www.hjarch.com)

A NEW FACILITY FOR  
**BWHS - Locker Room Building**  
1359 Gamble Road, Centerton, AR 72719

DRAWN BY.  
**G.S.**

CHECK BY.  
**M.T.R.**

ISSUE DATE  
**04/06/2026**

PROJECT NO.  
2421.2

REVISION DATES

## ELECTRICAL SCHEDULES

S H E E T

## E5.1

**COPYRIGHT 2026**  
 THESE DRAWINGS AND SPECIFICATIONS ARE  
 THE EXCLUSIVE PROPERTY OF  
 HIGHT JACKSON ASSOCIATES, P.A.  
 USE OR REPRODUCTION IS PROHIBITED  
 WITHOUT WRITTEN CONSENT

HSA JOB # 25-200



**HSAConsultants.com**

HSA JOB # 25-200